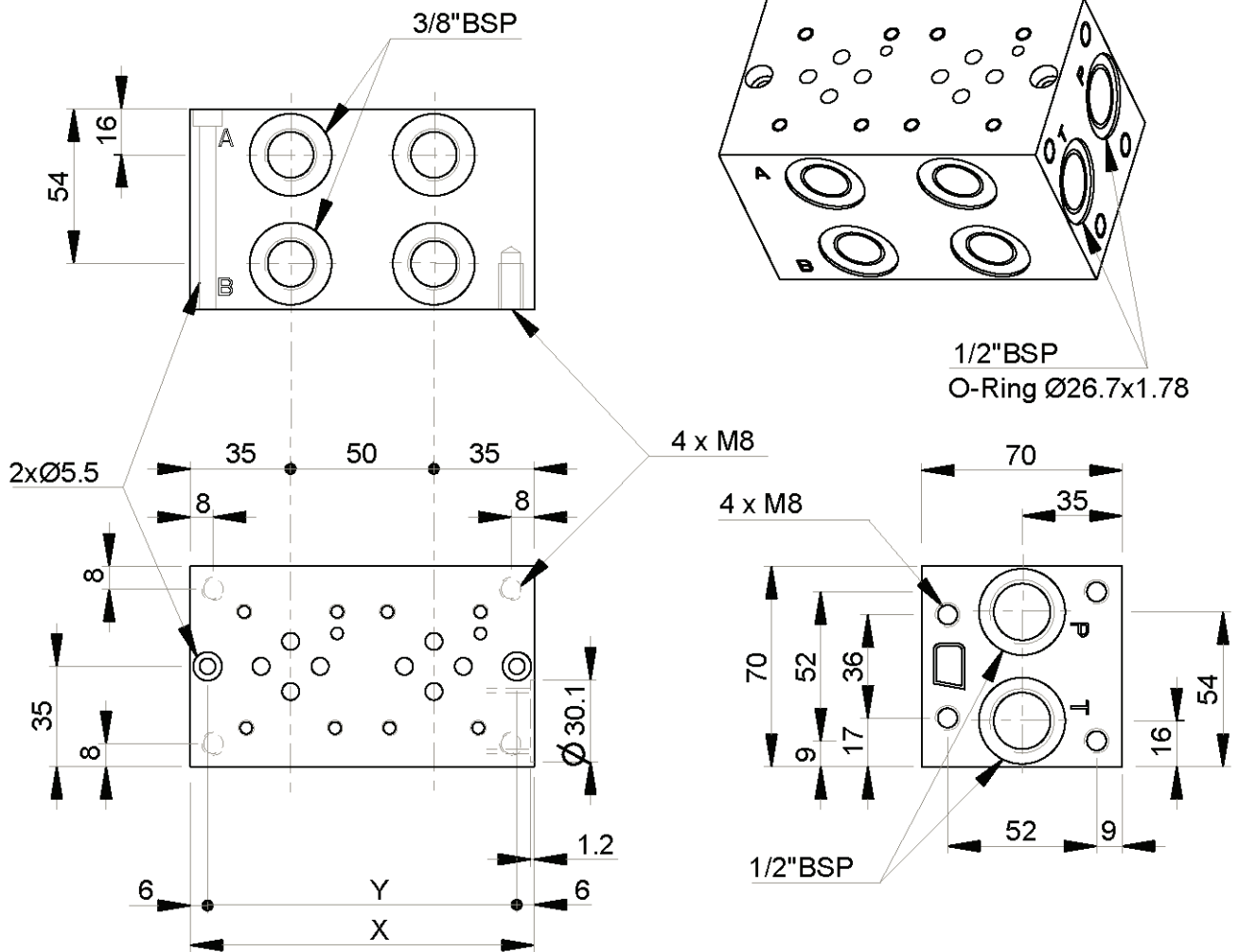
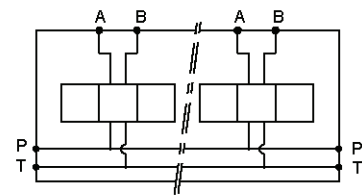


# Mehrfachanschlussplatte NG 6



Anschlüsse	X	Y	Guss (kg)	Alu (kg)
1	70	58	2.10	0.80
2	120	108	3.60	1.40
3	170	158	5.10	2.00
4	220	208	6.60	2.60
5	270	258	8.10	3.20
6	320	308	9.60	3.80
7	370	358	11.10	4.40
8	420	408	12.60	5.00



Werkstoff: Gusseisen EN-GJL-250 phosphatiert  
 Alu, oberflächenveredelt  
 max. Durchfluss: 60 l/min