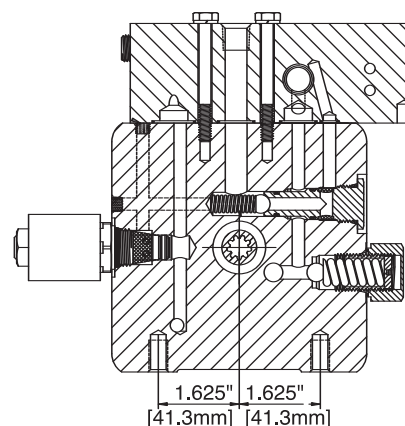
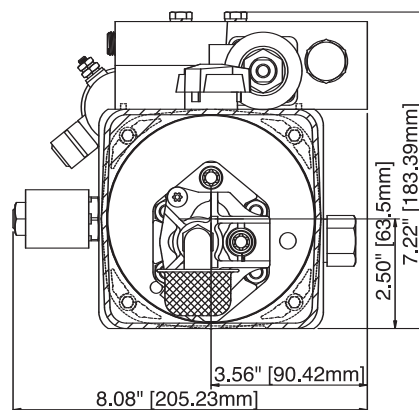
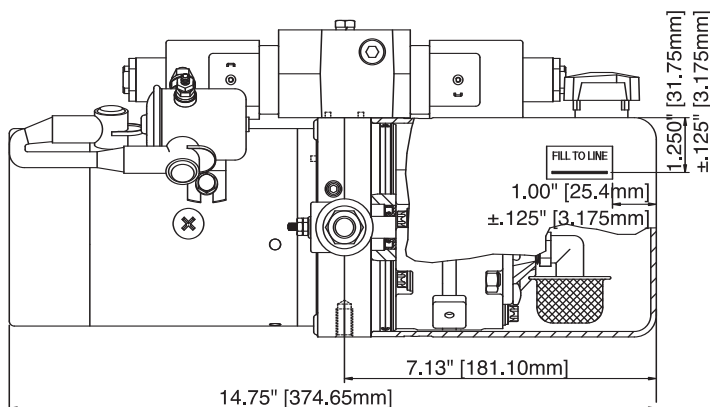


## DC-80SP

# 12V DC SNOW PLOW SOLENOID OPERATED POWER ANGLE & LIFT/GRAVITY DOWN

Designed to operate all functions of a power operated angling snow plow. The unit includes a lift-hold-gravity lower function for the blade, with a continuous "float" capability. A directional valve controls power angling of the blade, 2 cross-over reliefs protect the system from damage should the blade be obstructed while plowing.

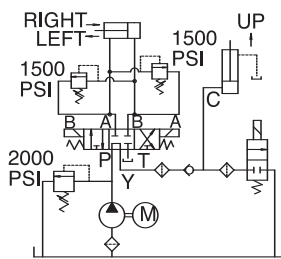


ENDHEAD SECTION

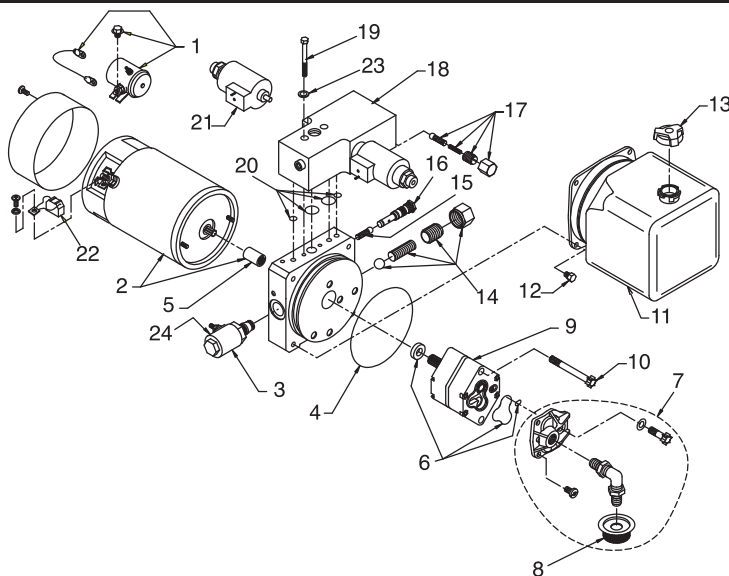
## UNIT SPECIFICATION

## HYDRAULIC CIRCUIT

Motor	12V DC 1 Term Std. Extended Duty
Pump	AFC 1.6 CC/Rev. (.098 Cu. In./Rev.)
Relief	Adj. Relief Valve Set At 2000 PSI
Endhead	1/4 NPTF Ports "A", "B" & "C" (On U-Valve) (2) 3/8-16 Tap X .62 Deep Mtg. Holes
Tank	1.5 Qt. Capacity Horiz. Mount Plastic Tank W/Breather-Filler Port
Valving	3P4W Solenoid Operated Directional Control Valve W/(2) 12V DC Solenoids/Crossover Relief Valves Set At 1500 PSI
Wiring	12V DC To U-Valve Solenoids, Motor Solenoid & Release Solenoid



## DC-80SP



ITEM	DESCRIPTION	P/N	QTY.
1	Start Switch Assy.	KS1	1
2	DC Motor 12V	KMD1	1
3	Valve NC 12V DC	VF-4009	1
4	Reservoir O-Ring	G1-1073-48	1
5	Coupling	1118-AA	1
6	Pump O-Ring Kit	K-40	1
7	Inlet Plumbing Kit	KH	1
8	Filter	1611-AA	1
9	Pump Assy.	KP16	1
10	Pump Mounting Bolt	F1-1052-75	2
11	Reservoir	3540-AC	1
12	Reservoir Screw	3346-AA	4
13	Breather	8060-CC	1
14	Adj. Relief Valve Assy.	RV-2	1
15	Spring And Ball Assy.	S1-1004-12	1
16	Valve Check Assy.	2290-BA	1
17	Crossover Relief Valve Kit	S8-6000-38	2
18	U-Valve 4W3P CCCP 12V N2	U1-6710-81	1
19	Bolt 1/4-20 X 2 1/2 Hex	F1-1032-50	2
20	U-Valve O-Ring Kit	K-42	1
21	Solenoid Assy. DC	E1-4005-12	2
22	Motor Brush Kit	K-90	1
23	Lock Washer	1479-AA	2
24	Coil Only	EF-1082	1