

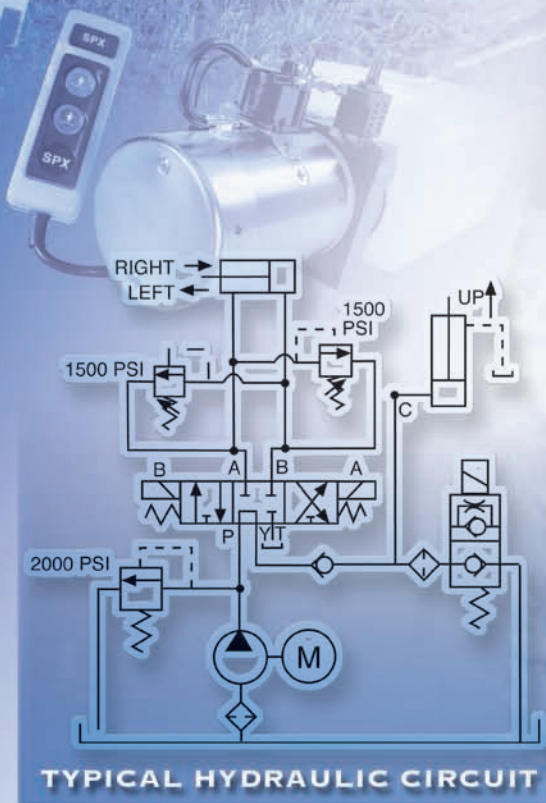
AC/DC Hydraulic Power Unit Applications

Snow Plow

Typical units for this application:

- DC-80SP

This power unit is designed to operate all functions of a power operated angling snow plow. The unit includes a lift-hold-gravity-lower function for the blade, with a continuous "float" capability. A directional valve controls angling of the blade, two cross-over reliefs protect the system from damage should the blade be obstructed while plowing.



Power Unit shown is a representation of a typical unit. Actual unit may vary.