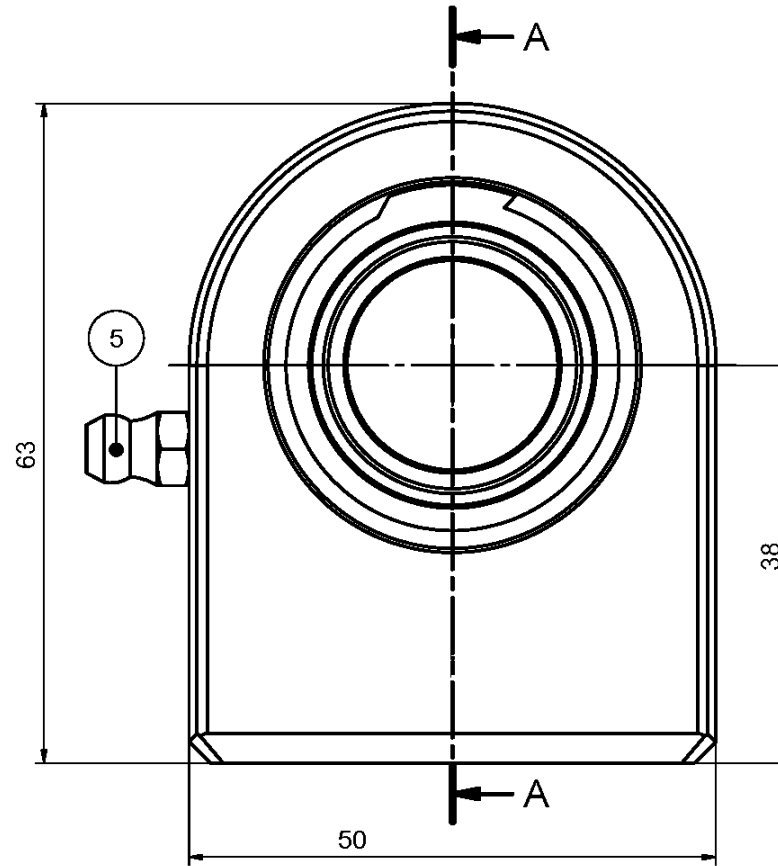
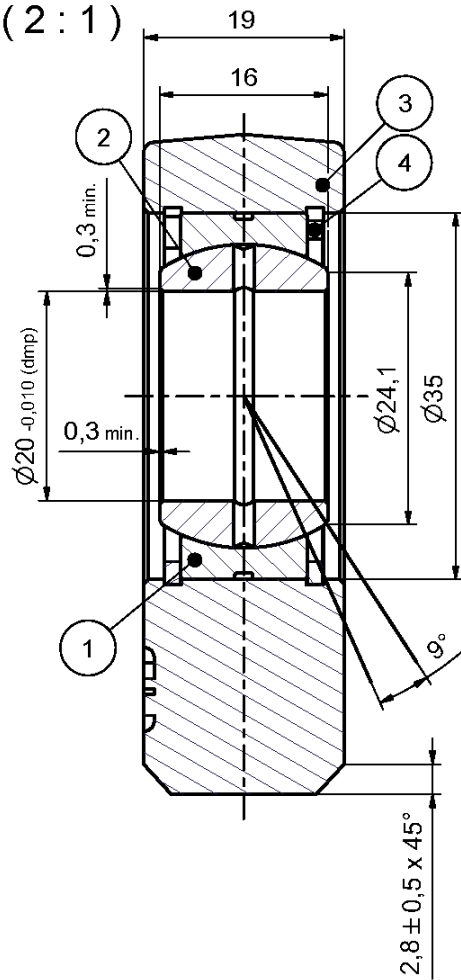


A-A (2:1)



Radiale Lagerluft / Radial clearance:

min 0,030mm max. 0,082mm

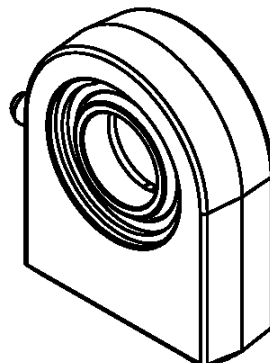
Tragzahlen / Load ratings:

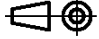
C = 30 kN Co = 67 kN

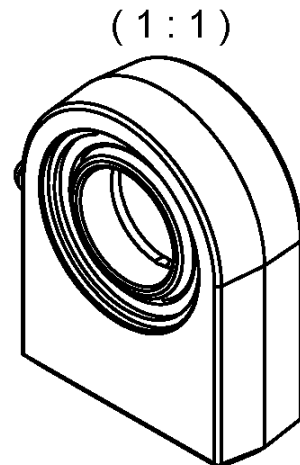
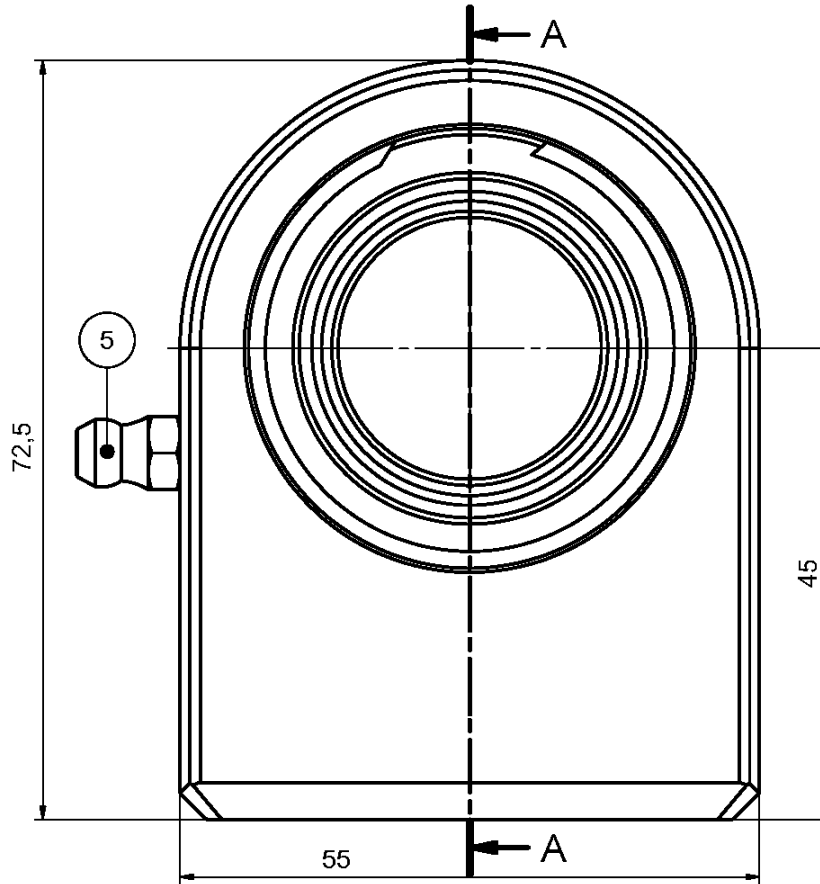
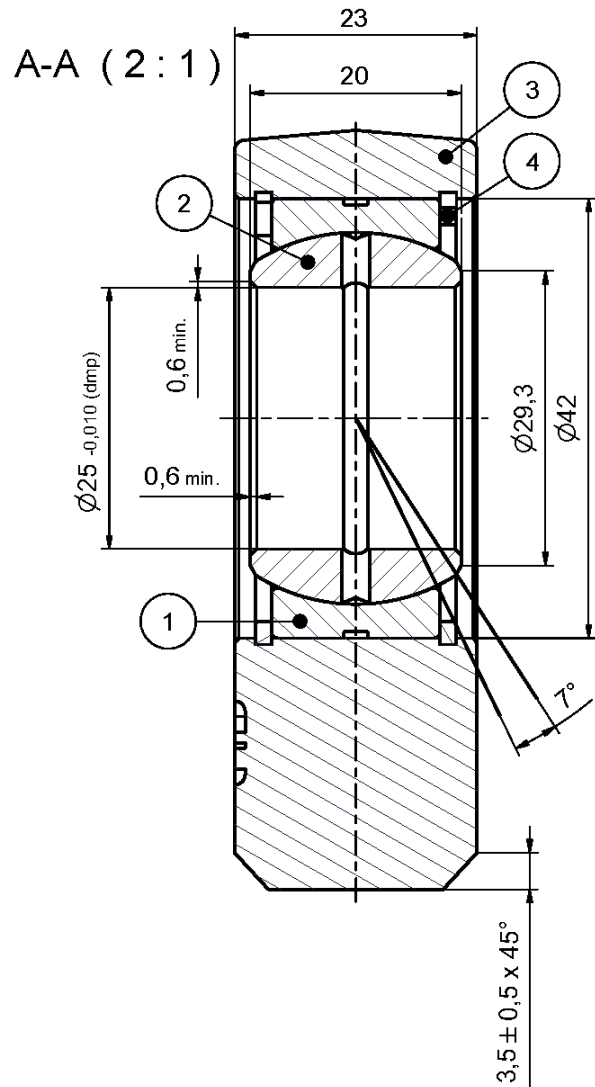
Oberflächenbehandlung / Treatment of surface:

Lager manganphosphatiert, konserviert
und mit Mo S 2 behandelt, Kopf konserviert
Bearing phosphated, preserved and treated
with MO S 2, rod end preserved

(1:1)



 Oberfläche konserviert / Surface preserved	Allgmeintoleranz General tolerances DIN ISO 2768-mk	Werkstück- kanten gratfrei Sharp edges removed	Maßstab/Scale: 2:1	Gewicht/Weight: 0,335 kg
			Material: Gelenkkopf / rod end: St52-3 / S355J2G3 Lager / bearing: Wälzlagerstahl / bearing steel	
00648.GF20DO				
Zusammenstellungszeichnung / Composite assembly drawing				



Radiale Lagerluft / Radial clearance:


min 0,037mm max. 0,100mm

Tragzahlen / Load ratings:

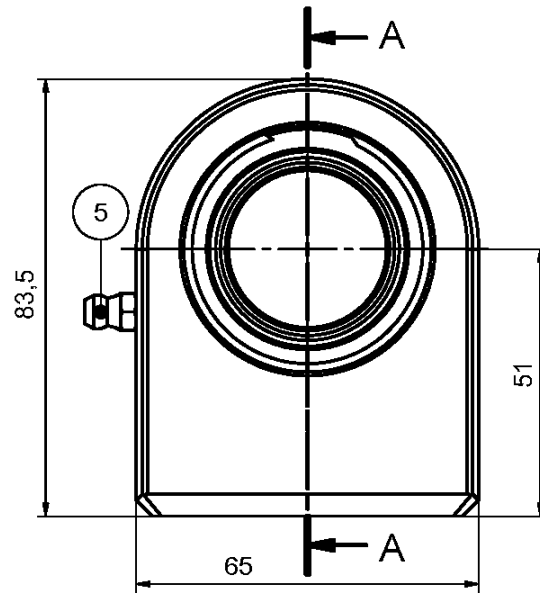
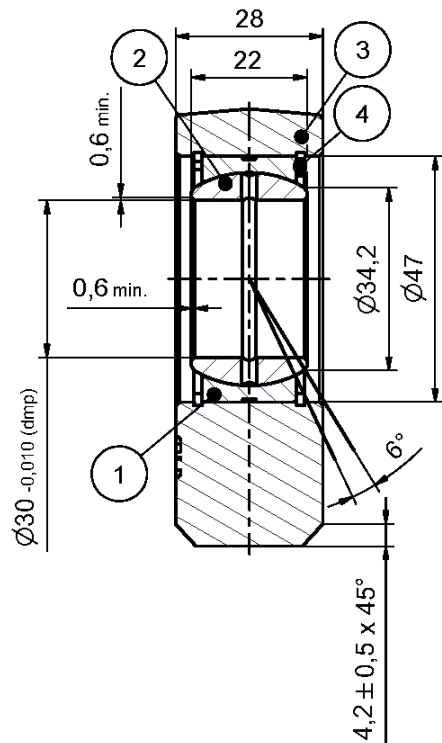
C = 48 kN Co = 69,5 kN

Oberflächenbehandlung / Treatment of surface:

Lager manganphosphatiert, konserviert
und mit Mo S 2 behandelt, Kopf konserviert
Bearing phosphated, preserved and treated
with MO S 2, rod end preserved

 Oberfläche konserviert / Surface preserved	Allgmeintoleranz General tolerances DIN ISO2768-mk	Werkstück- kanten gratfrei Sharp edges removed	Maßstab/Scale: 2:1	Gewicht/Weight: 0,503 kg
			Material: Gelenkkopf / rod end: St52-3 / S355J2G3 Lager / bearing: Wälzagerstahl / bearing steel	
00648.GF25DO				
Zusammenstellungszeichnung / Composite assembly drawing				

A-A (1:1)



Radiale Lagerluft / Radial clearance:

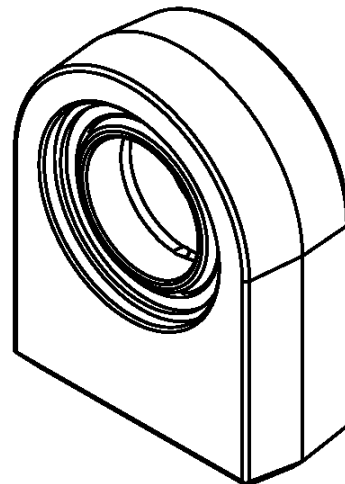
min 0,037mm max. 0,100mm


Tragzahlen / Load ratings:

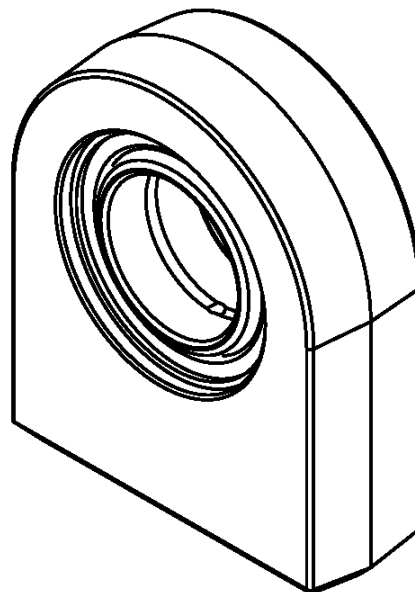
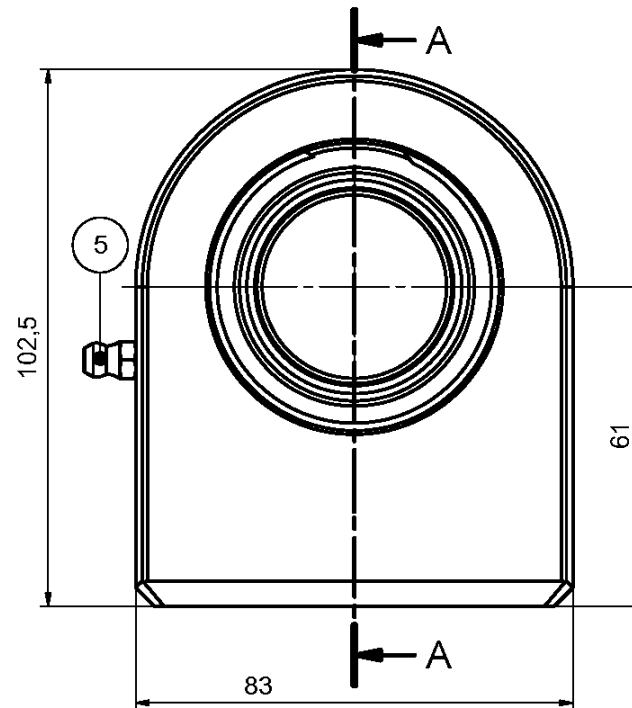
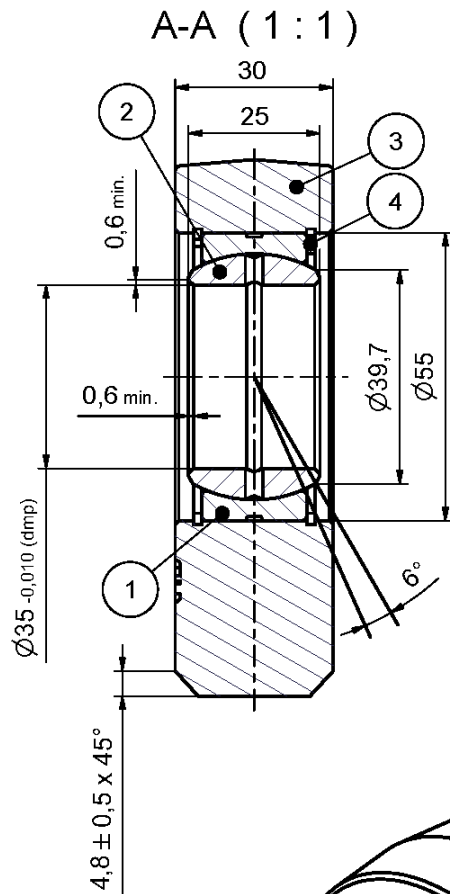
C = 62 kN Co = 118 kN

Oberflächenbehandlung / Treatment of surface:

Lager manganphosphatiert, konserviert
und mit Mo S 2 behandelt, Kopf konserviert
Bearing phosphatet, preserved and treated
with MO S 2, rod end preserved



 Oberfläche konserviert / Surface preserved	Allgmeintoleranz General tolerances DIN ISO 2768-mk	Werkstück- kanten gratfrei Sharp edges removed	Maßstab/Scale: 1:1	Gewicht/Weight: 0,816 kg
			Material: Gelenkkopf / rod end: St52-3 / S355J2G3 Lager / bearing: Wälzagerstahl / bearing steel	
00648.GF30DO				
Zusammenstellungszeichnung / Composite assembly drawing				



Radiale Lagerluft / Radial clearance:

min 0,037mm max. 0,100mm

Tragzahlen / Load ratings:

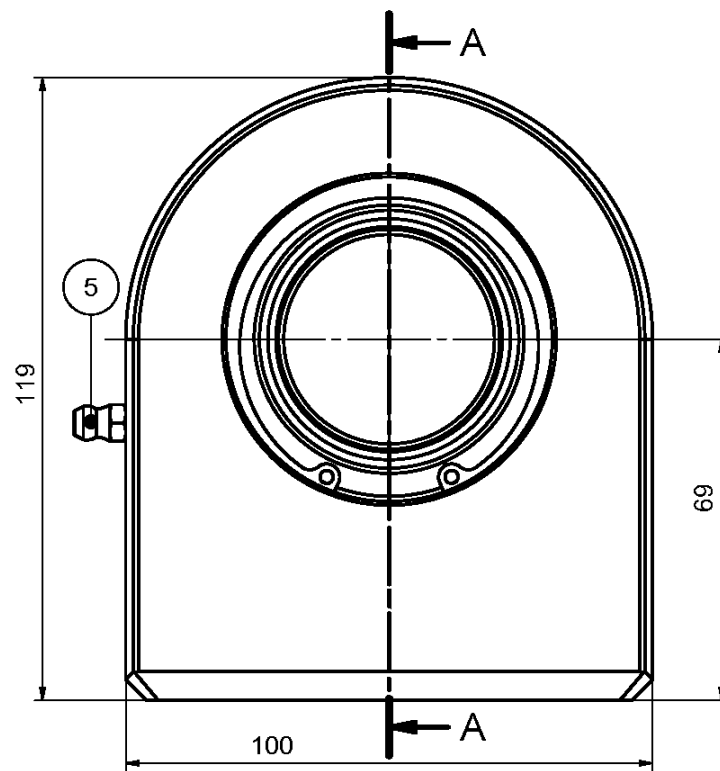
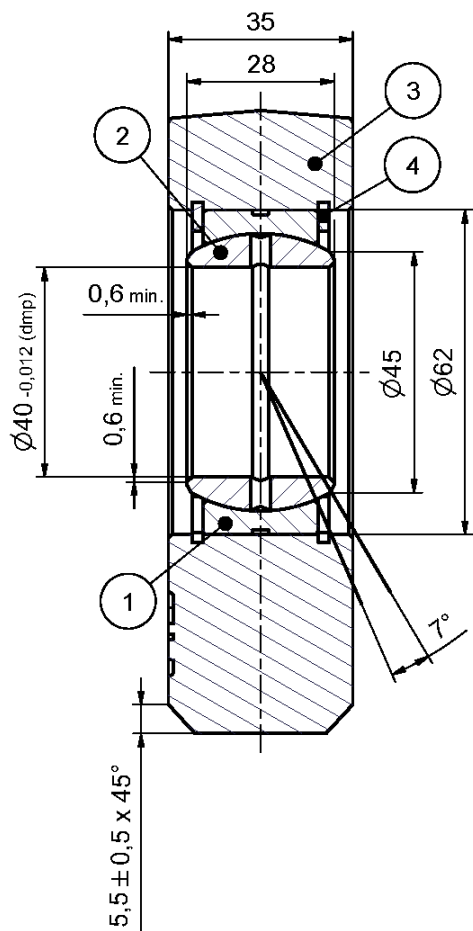
C = 80 kN Co = 196 kN

Oberflächenbehandlung / Treatment of surface:

Lager manganphosphatiert, konserviert
und mit Mo S 2 behandelt, Kopf konserviert
Bearing phosphated, preserved and treated
with MO S 2, rod end preserved

 Oberfläche konserviert / Surface preserved	Allgmeintoleranz General tolerances DIN ISO 2768-mk	Werkstück- kanten gratfrei Sharp edges removed	Maßstab/Scale: 1:1	Gewicht/Weight: 1,43 kg
			Material: Gelenkkopf / rod end: St52-3 / S355J2G3 Lager / bearing: Wälzagerstahl / bearing steel	
00648.GF35DO				
Zusammenstellungszeichnung / Composite assembly drawing				

A-A (1:1)



Radiale Lagerluft / Radial clearance:

min 0,043mm max. 0,120mm

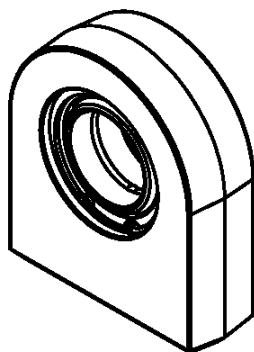
Tragzahlen / Load ratings:

C = 100 kN Co = 305 kN

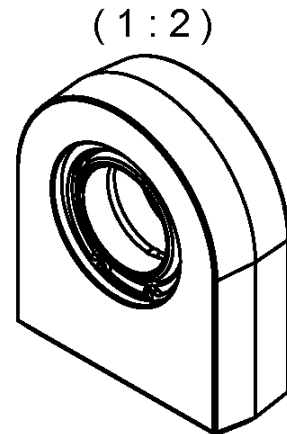
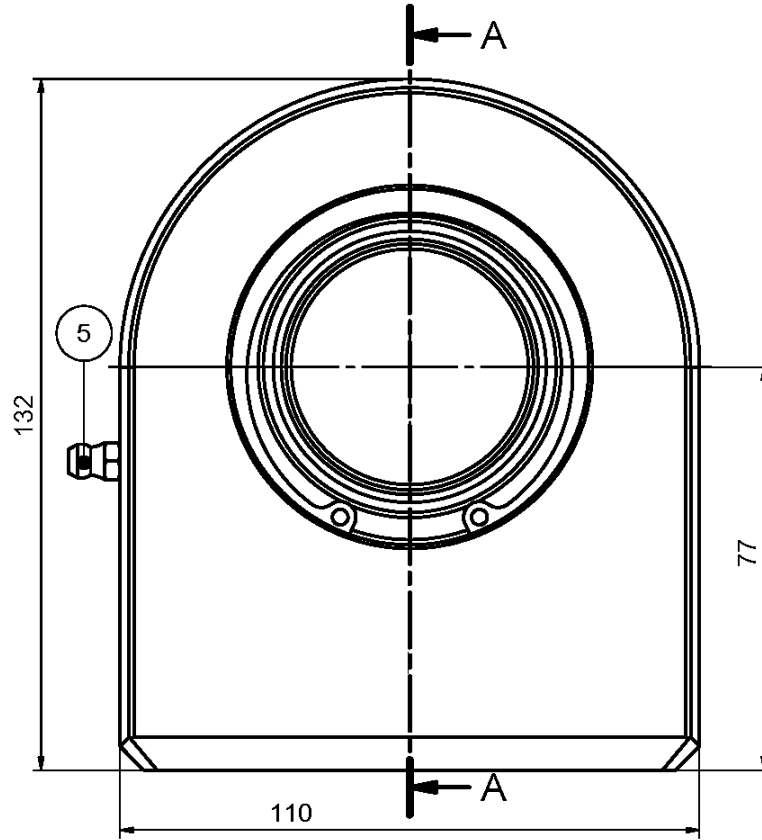
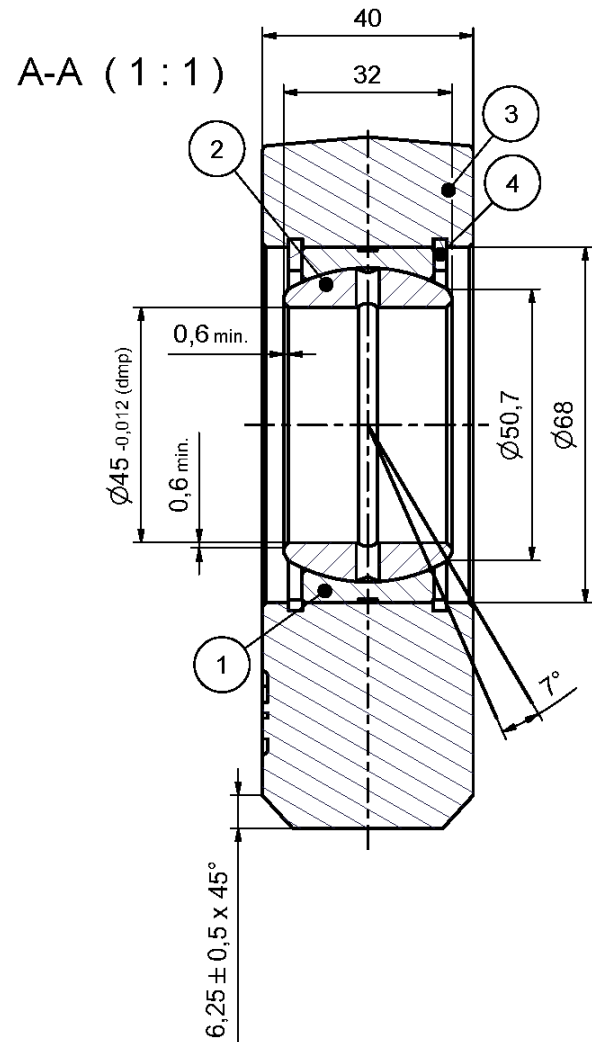
Oberflächenbehandlung / Treatment of surface:

Lager manganphosphatiert, konserviert und mit Mo S 2 behandelt, Kopf konserviert
 Bearing phosphated, preserved and treated with MO S 2, rod end preserved

(1:2)



 Oberfläche konserviert / Surface preserved	Allgmeintoleranz General tolerances DIN ISO 2768-mk	Werkstück- kanten gratfrei Sharp edges removed	Maßstab/Scale: 1:1	Gewicht/Weight: 2,348 kg
			Material: Gelenkkopf / rod end: St52-3 / S355J2G3 Lager / bearing: Wälzagerstahl / bearing steel	
00648.GF40DO				
Zusammenstellungszeichnung / Composite assembly drawing				



Radiale Lagerluft / Radial clearance:

min 0,043mm max. 0,120mm

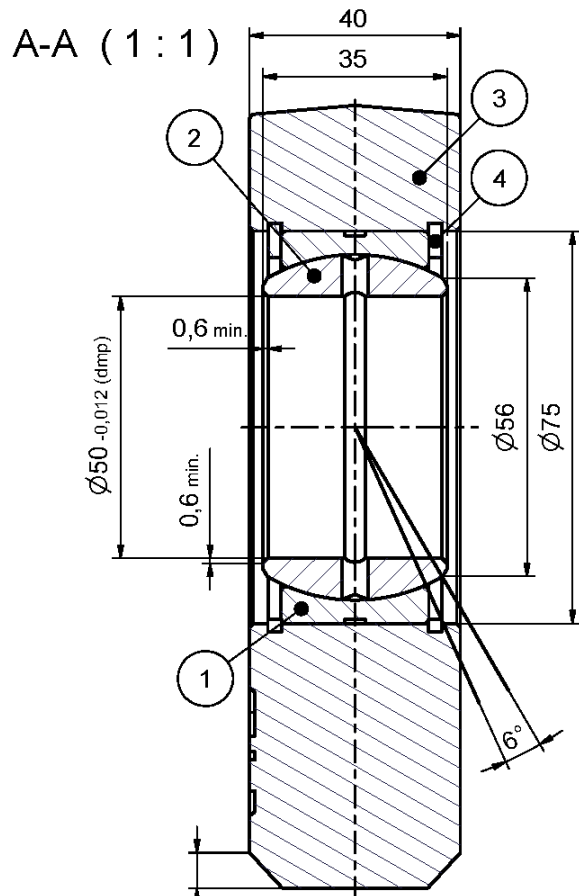
Tragzahlen / Load ratings:

C = 127 kN Co = 386 kN

Oberflächenbehandlung / Treatment of surface:

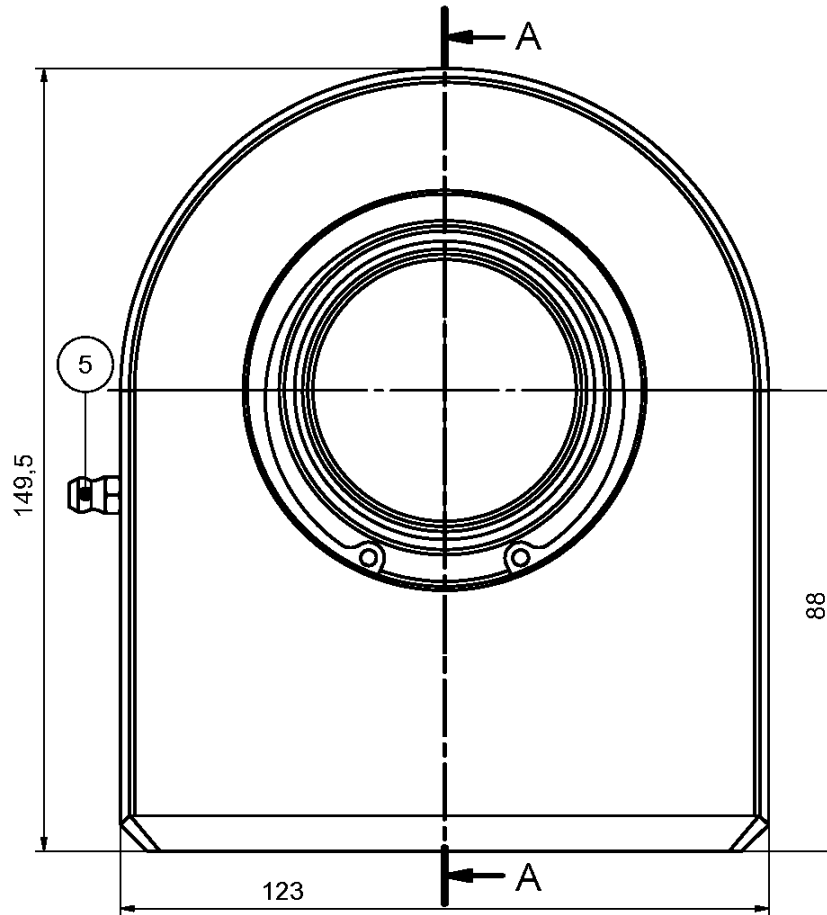
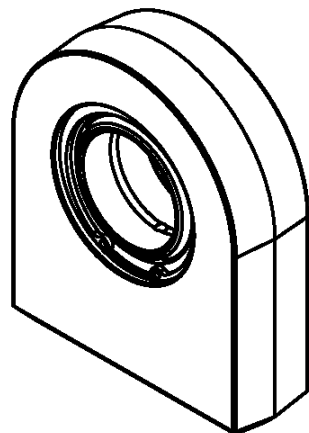
Lager manganphosphatiert, konserviert
und mit Mo S 2 behandelt, Kopf konserviert
Bearing phosphated, preserved and treated
with MO S 2, rod end preserved

 Oberfläche konserviert / Surface preserved	Allgmeintoleranz General tolerances DIN ISO 2768-mk	Werkstück- kanten gratfrei Sharp edges removed	Maßstab/Scale: 1:1	Gewicht/Weight: 3,276 kg
			Material: Gelenkkopf / rod end: St52-3 / S355J2G3 Lager / bearing: Wälzagerstahl / bearing steel	
00648.GF45DO				
Zusammenstellungszeichnung / Composite assembly drawing				



6,75 ± 0,5 x 45°

(1:2)



Radiale Lagerluft / Radial clearance:

min 0,043mm max. 0,120mm

Tragzahlen / Load ratings:

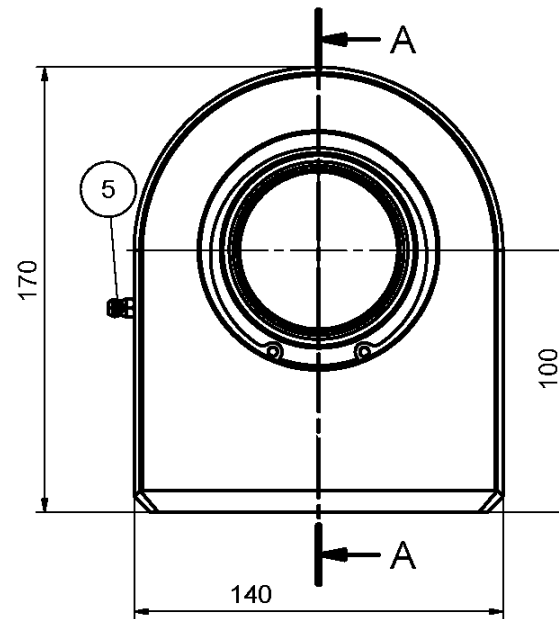
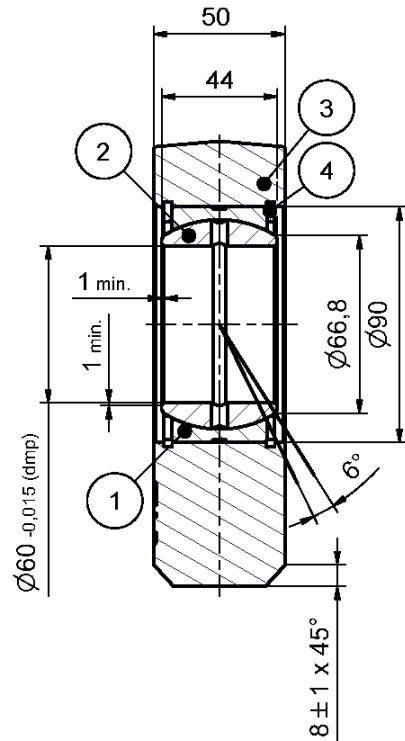
C = 156 kN Co = 441 kN

Oberflächenbehandlung / Treatment of surface:

Lager manganphosphatiert, konserviert
und mit Mo S 2 behandelt, Kopf konserviert
Bearing phosphated, preserved and treated
with MO S 2, rod end preserved

 Oberfläche konserviert / Surface preserved	Allgmeintoleranz General tolerances DIN ISO 2768-mk	Werkstück- kanten gratfrei Sharp edges removed	Maßstab/Scale: 1:1	Gewicht/Weight: 4,252 kg
			Material: Gelenkkopf / rod end: St52-3 / S355J2G3 Lager / bearing: Wälzagerstahl / bearing steel	
00648.GF50DO				
Zusammenstellungszeichnung / Composite assembly drawing				

A-A (1:2)



Radiale Lagerluft / Radial clearance:

min 0,043mm max. 0,120mm

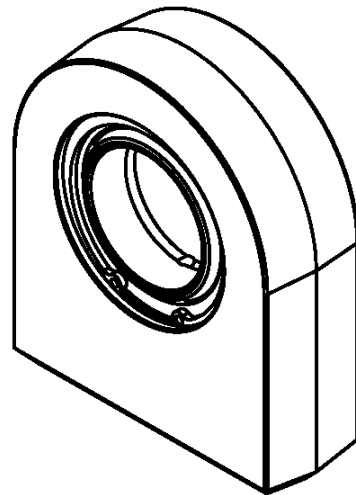
Tragzahlen / Load ratings:

C = 245 kN Co = 570 kN

Oberflächenbehandlung / Treatment of surface:

Lager manganphosphatiert, konserviert
 Bearing phosphated, preserved and treated
 with MO S 2, rod end preserved

(1:2)



 Oberfläche konserviert / Surface preserved	Allgmeintoleranz General tolerances DIN ISO 2768-mk	Werkstück- kanten gratfrei Sharp edges removed	Maßstab/Scale: 1:2	Gewicht/Weight: 6,731 kg
			Material: Gelenkkopf / rod end: St52-3 / S355J2G3 Lager / bearing: Wälzagerstahl / bearing steel	
00648.GF60DO				
Zusammenstellungszeichnung / Composite assembly drawing				